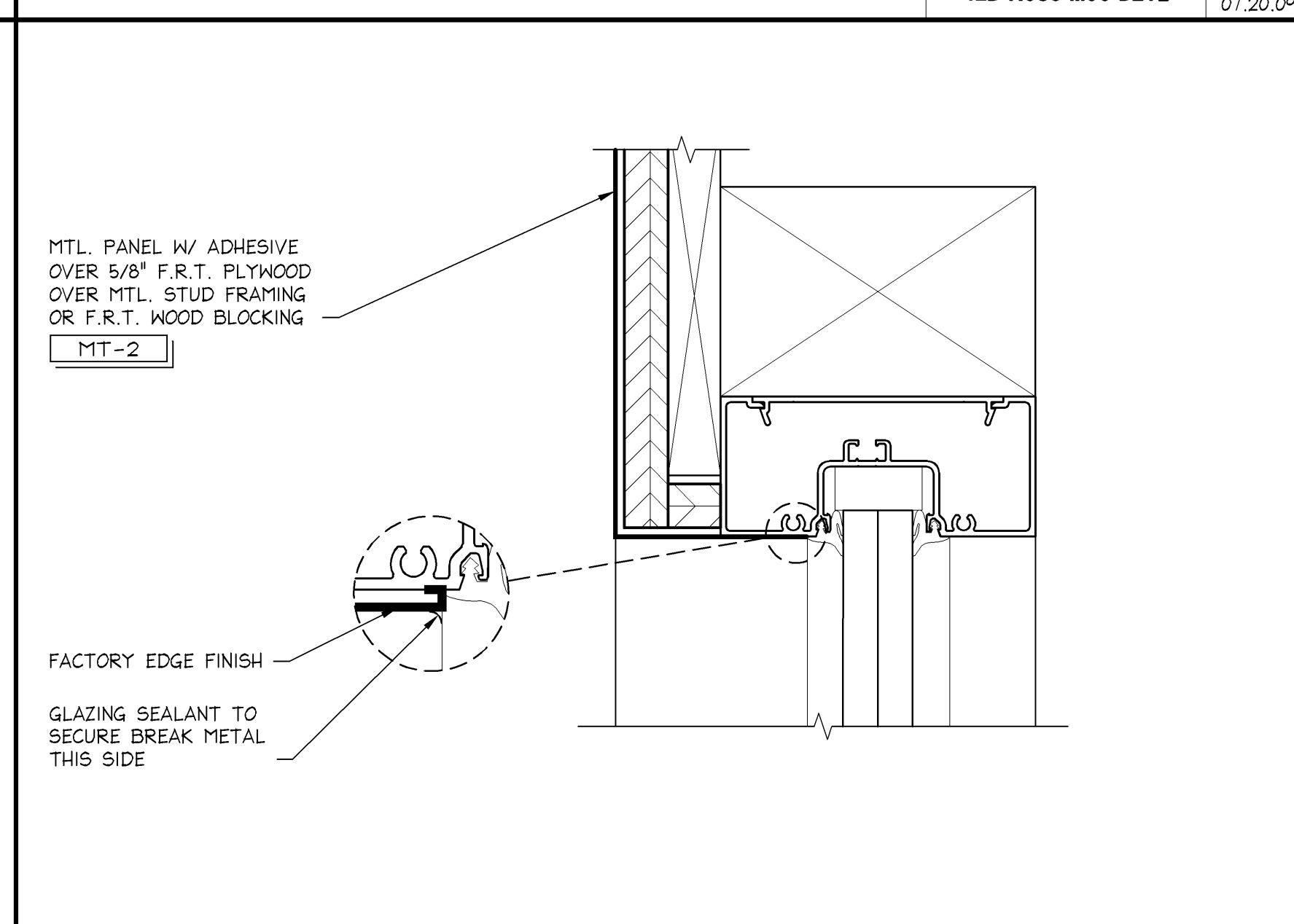
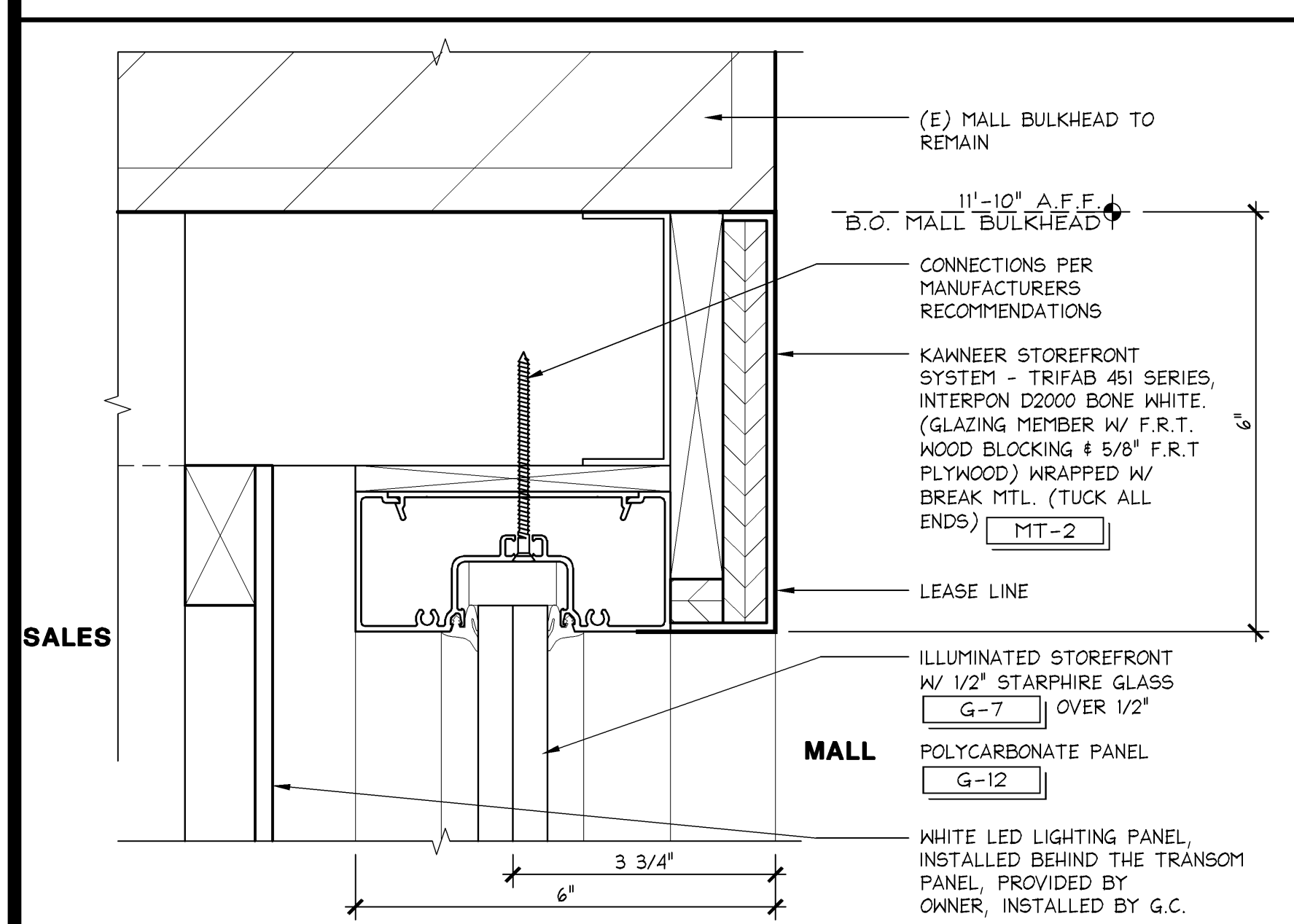
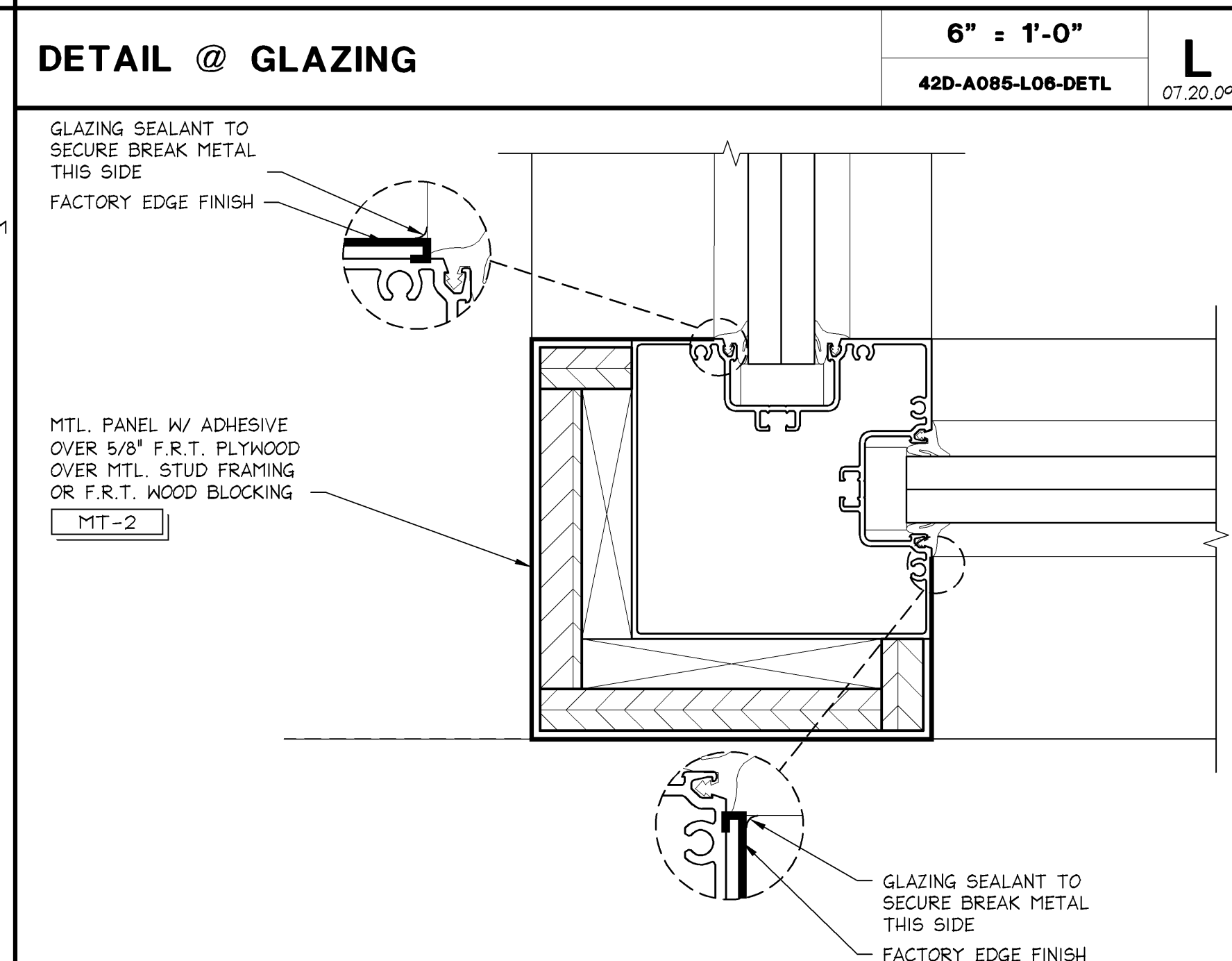
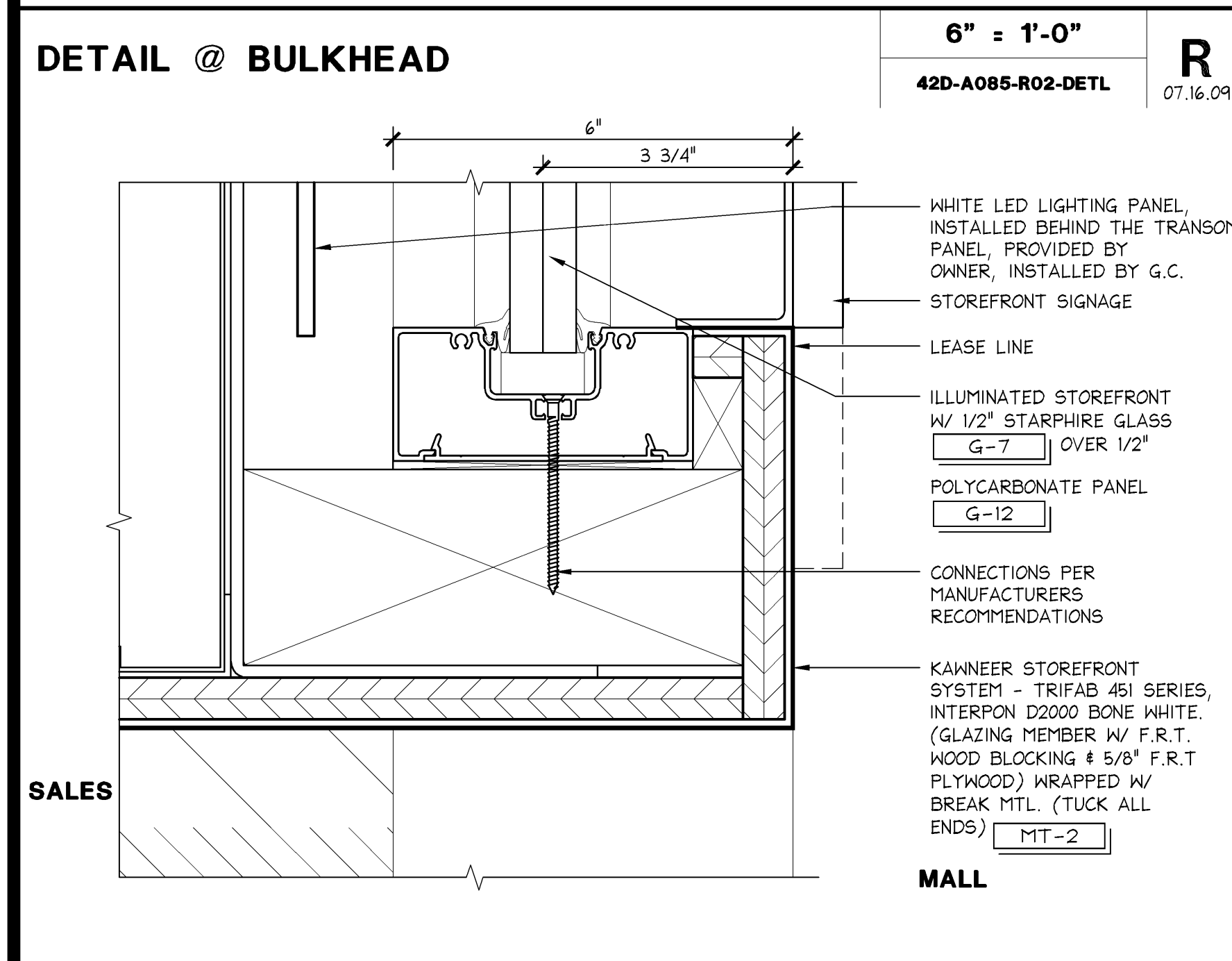


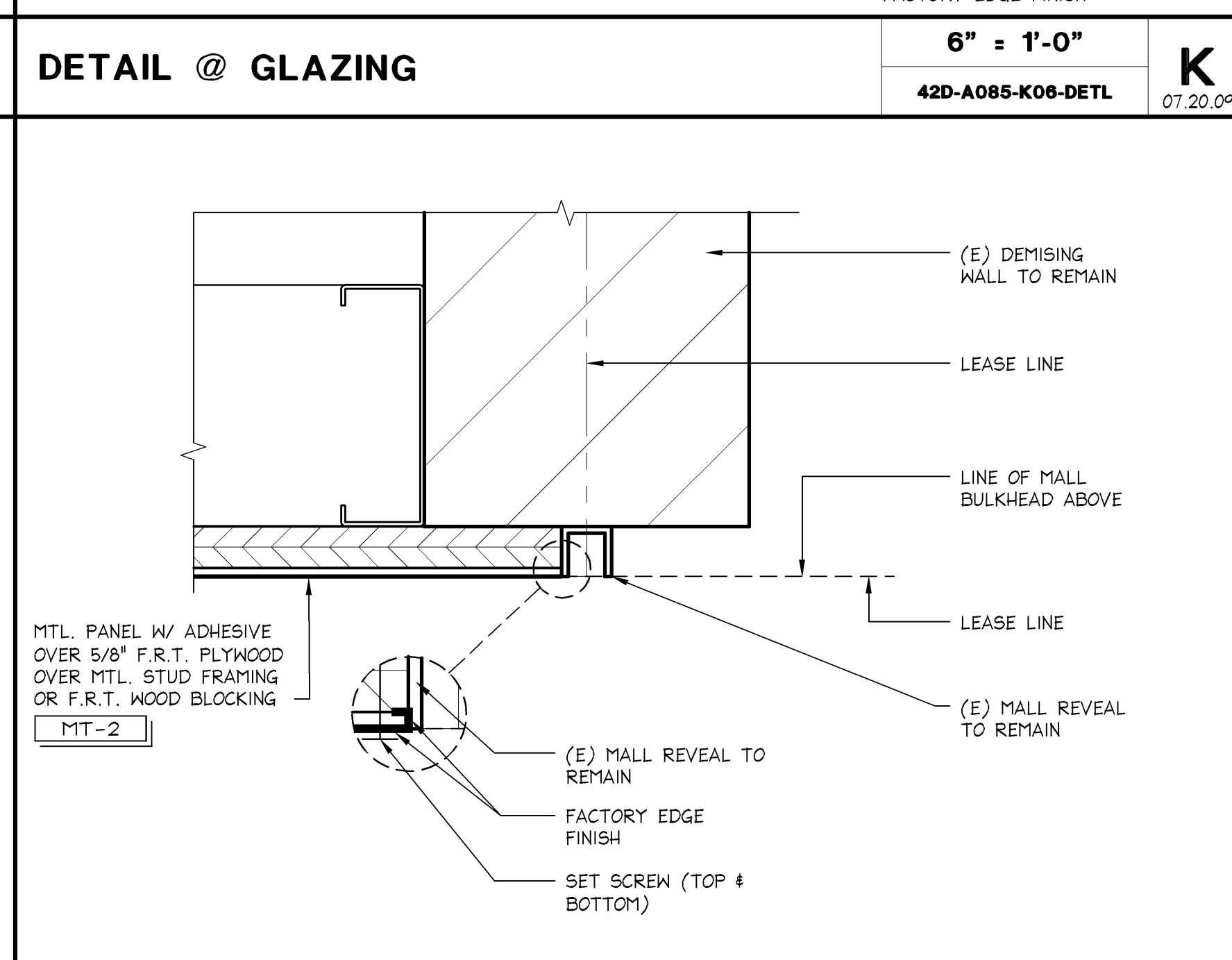
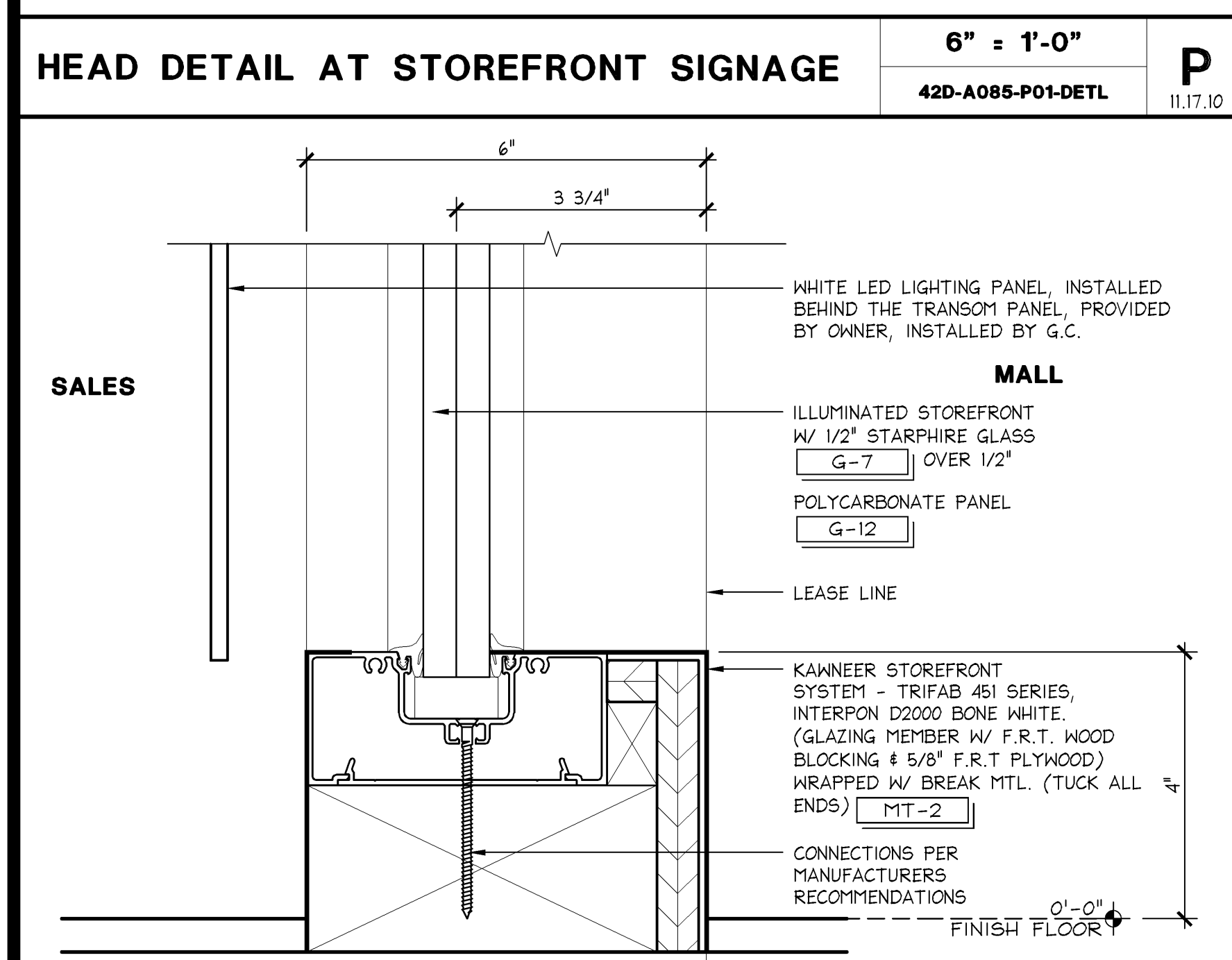
DETAIL @ GLAZING
6" = 1'-0"
42D-A085-M08-DET1
M
07.20.04



DETAIL @ GLAZING
6" = 1'-0"
42D-A085-L08-DET1
L
07.20.04

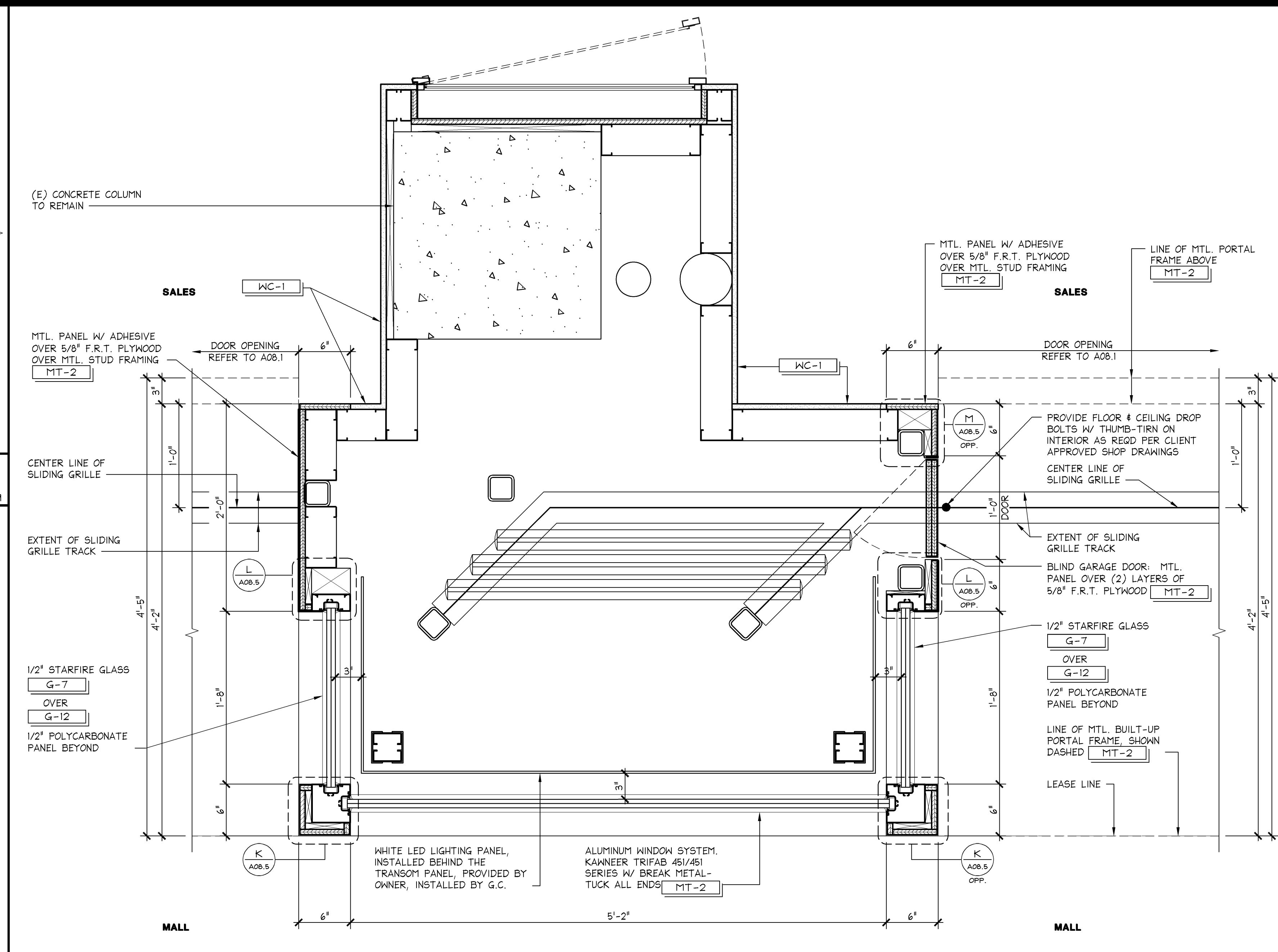


DETAIL @ GLAZING
6" = 1'-0"
42D-A085-K08-DET1
K
07.20.04

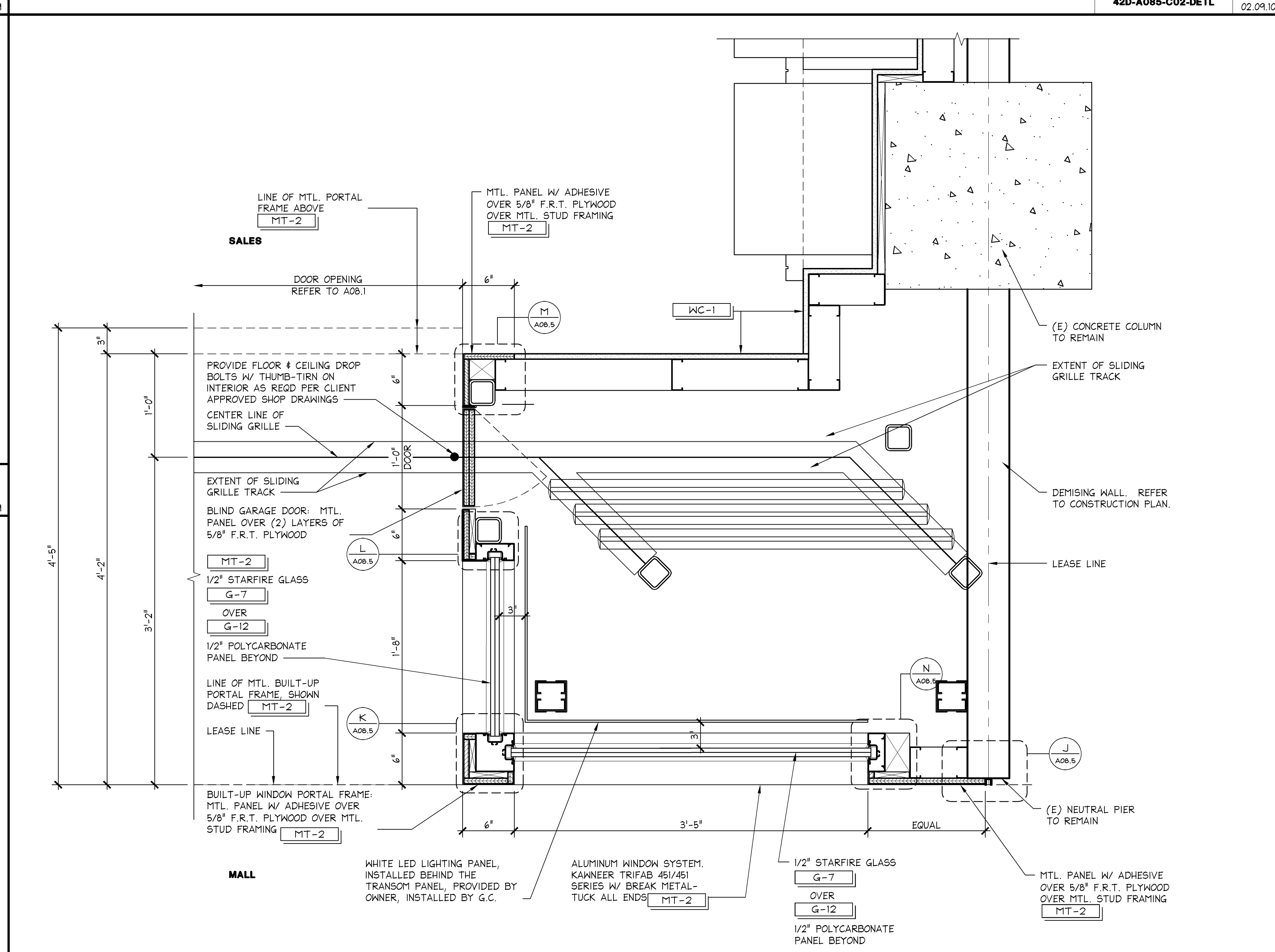


DETAIL @ NEUTRAL PIER
6" = 1'-0"
42D-A085-J08-DET1
J
07.20.04

BASE DETAIL
6" = 1'-0"
42D-A085-N01-DET1
N
11.17.10



ENLARGED PLAN @ STOREFRONT
1 1/2" = 1'-0"
42D-A085-C02-DET1
C
02.09.10



ENLARGED PLAN @ STOREFRONT
1 1/2" = 1'-0"
42D-A085-A02-DET1
A
07.15.04

SHREMSHOCK

Shremshock Architects, Inc.
6130 S. Sunbury Rd., Westerville, OH 43081
T: 614 545 4550 | F: 614 545 4555 | shremshock.com
Gerald S. Shremshock, Architect
Timothy J. Shremshock, Architect

Limitedbrands

LIMITED STORE PLANNING, INC.
d/b/a STORE DESIGN & CONSTRUCTION
Three Limited Parkway • Columbus, Ohio 43230
Telephone: 614.415.7000 • Fax: 614.415.7349

PROJECT INFORMATION:
24200161
BATH & BODY WORKS
THE GALLERIA II
SPACE AND DESIGN
8000 WESTMEIER RD.
HOUSTON, TX 77036

REQUIRED BY: _____ DATE: _____
REVISIONS:
ELITE CONSTRUCTION GROUP
LAKE JACKSON, TX
PHONE: 979-283-5012
NOTE: THESE PRINTS HAVE BEEN
REDUCED BY 50 PERCENT SCALE
WILL BE 50 PERCENT OF WHAT IS
NOTED ON PLANS

DATE ISSUED: 3/7/14
DESIGNED BY: SB
DRAWN BY: DGR
CHECKED BY: RHW

STORYFRONT
DETAILS

DRAWING NUMBER:
A08.5

PKG 1+
14150
130940

FULL REMODEL
EASTON-G
00061216
A/E PROJECT #:

SCOPE:
DESIGN TYPE:
LSDAC PROJECT #: